



# User Manual

# Mandala Scan



Please read the manual before using the tools.

Version 1.0  
Updated March 15<sup>th</sup>, 2025

## **1. General Notes**

### **1.1 Product Feature and Intend Use**

The Mandala Scan is a compact biofeedback device that tracks stress levels and energy balance using Heart Rate Variability (HRV) analysis. It helps identify emotional and energetic imbalances, providing real-time insights for optimal well-being.

Pair it with the Mandala Scan app, which offers personalized frequency recommendations and coherence tracking. When integrated with SoulSync iOS Application, it delivers affirmations and subliminal programming to enhance emotional resilience and mental clarity.

Your Mandala Scan has been quality-tested and is ready to support your wellness journey anytime, anywhere.

### **1.2 Safety Warnings**

- Check all accessories upon unboxing.
- Read and follow all safety instructions in the manual.

### **1.3 Warranty**

- Your Mandala Scan includes a one-year warranty from the date of delivery.
- If you experience any issues, contact customer support immediately.
- The warranty does not cover damage due to:
  - Misuse or neglect
  - Unauthorized modifications or disassembly
  - Customs/import fees or indirect damage
  - If repairs are needed due to misuse, all costs (including shipping) will be the user's responsibility.

#### **1.4 Important Precautions**

- Do not use the device if it appears damaged. Contact the support.
- Ensure the correct voltage for your country before use.
- Charge for at least one and half hours before the first use.
- Do not disassemble or modify the device.
- Keep dry – avoid rain, high humidity, heat, and dust.

#### **1.5 Maintenance**

1. If unused for a while, charge the device for two hours before use.
2. Use soft cloth or water-based glass cleaner for maintenance.
3. Keep the device clean to ensure proper performance.

#### **1.6 Product Includes**

1. Mandala Scan
2. USB Type-C cable
3. Ear Clip Sensor
4. Mandala Bag

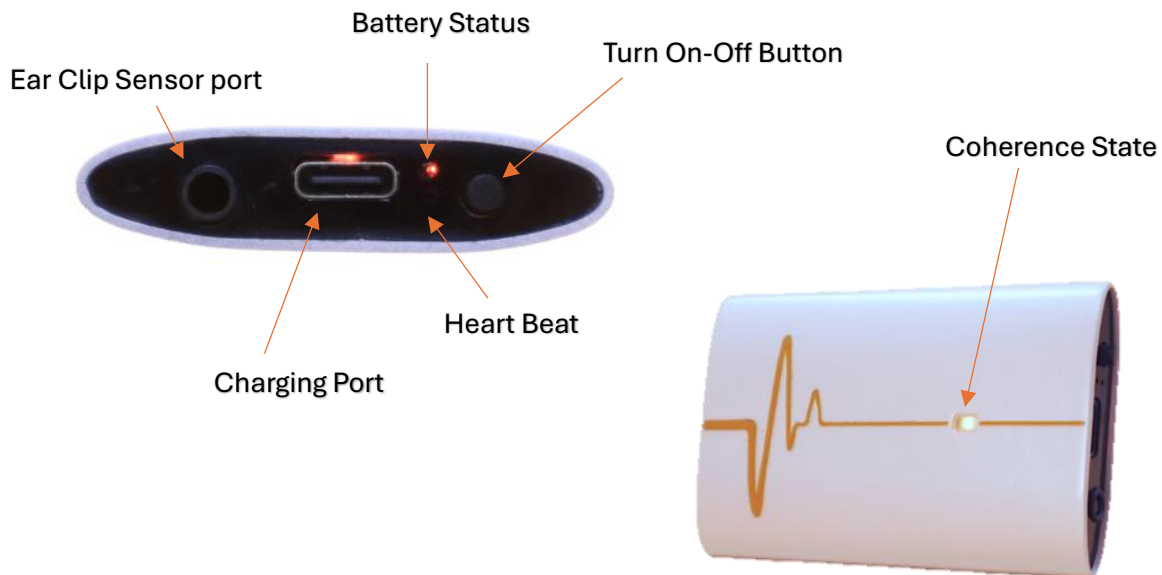


## 2. Technical Data

### 2.1 Specifications

Product name:	Mandala Scan
Color:	White
Material:	ABS plastic White and Acrylic Black
Charging Interface:	USB Type-C
Battery Type:	3.7v / 500 mAh Li-Po Battery
Working Mode:	Coherence state feedback
Bluetooth:	BLE Bluetooth
Size:	70 x 75 x 25 mm
Weight:	800 grams

### 2.2 Overview and Function



## 2.3 Charging Setup

1. To charge the Mandala Scan, connect the USB-C cable to the device and a power adapter, then plug it into a power source.

2. Charging takes about one and half hours from an empty battery and lasts over 4 hours. (*Battery capacity can be reduced.*)

3. The red light will blink while the battery is charging and will stop remaining red once the battery is fully charged.



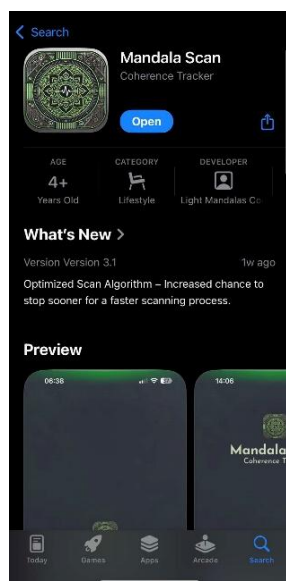
To protect the battery life span, please don't overcharge the battery.

## 3. Mandala Scan Application

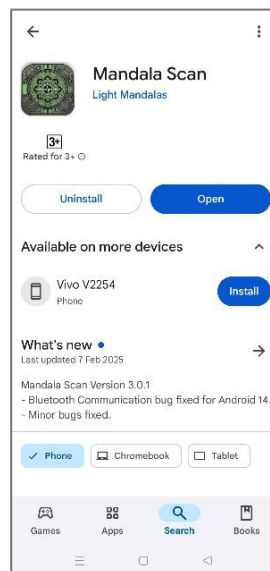
### 3.1 Application Setup

The Mandala Scan app is available on iOS and Android. Download it from the App Store for iOS or Google Play Store for Android. For users in China, please download it from <https://light-mandalas.com/downloads>

#### App Store (iOS)

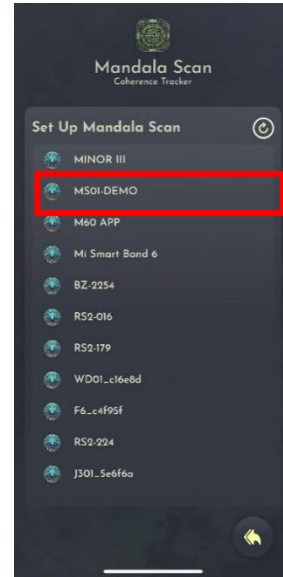
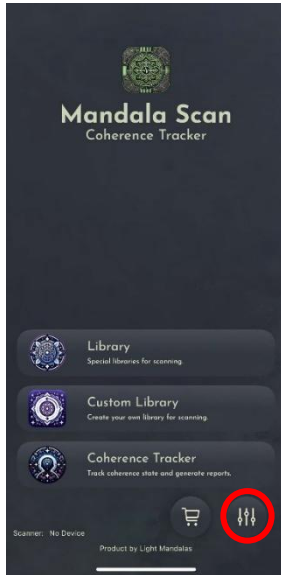


#### Play Store (Android)



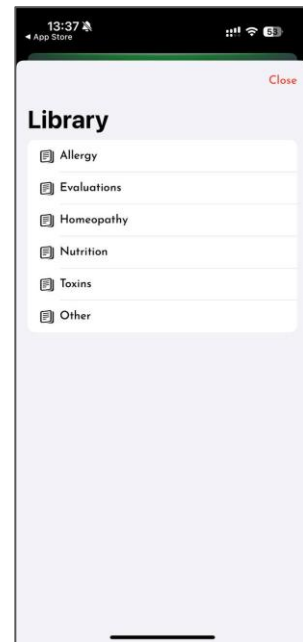
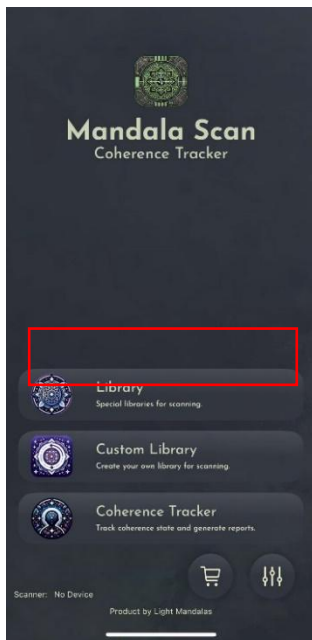
### 3.2 Pairing Bluetooth with Application

Tap the "Settings" icon at the bottom right, then select "Set Up Mandala Scan". The app will search for nearby devices. Choose the displayed serial number to connect via Bluetooth.



### 3.3 Library

**Library** – Choose a topic and scan to discover the essential elements you need.



Click this icon to see what the library includes.



Tap 'Scan' to begin analyzing your body's needs.



User can export the file in PDF format or share it with other users.

The higher the percentage, the more essential the element is for your body.

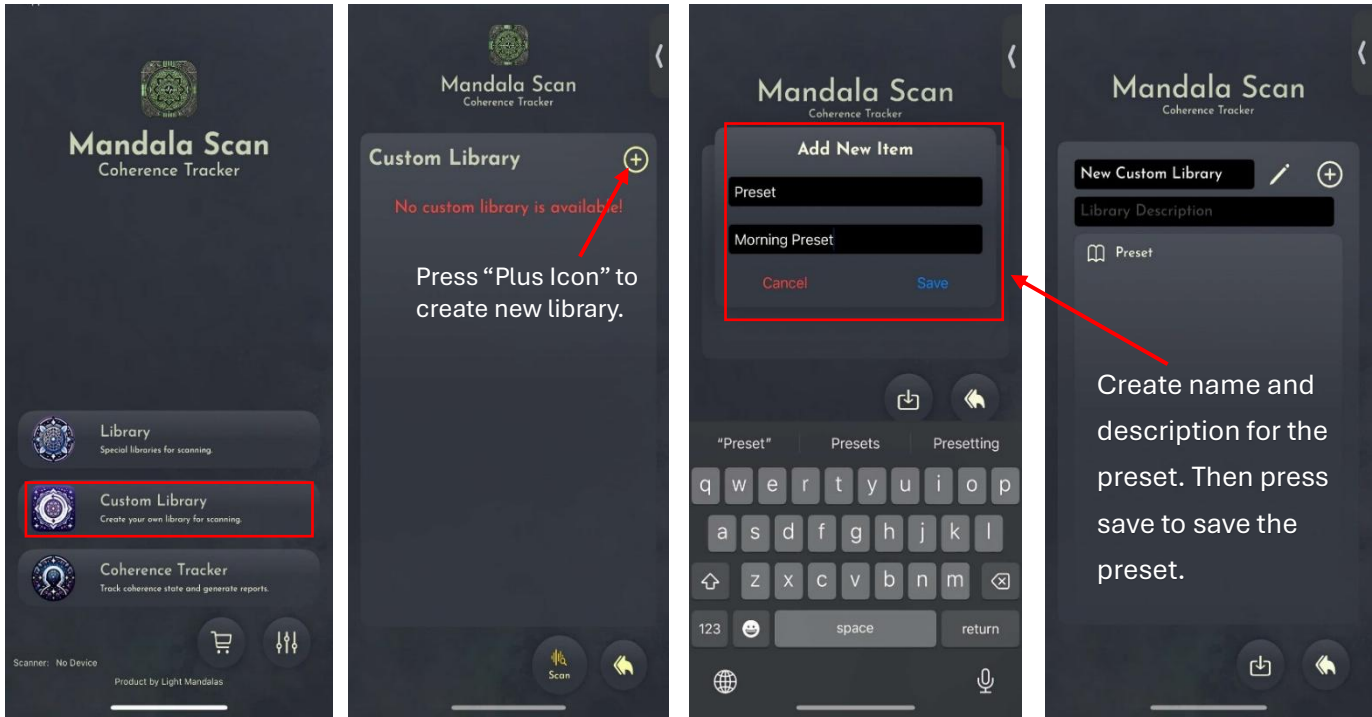
A higher percentage indicates a greater need for that specific element.

Scan Result: Allergy	
Meat & Poultry	
Total Scans: 620,145 Times	
Ham-Park	100%
Egg-Quail	91%
Turkey	89%
Veal Calf	76%
Beef	73%
Chicken	73%



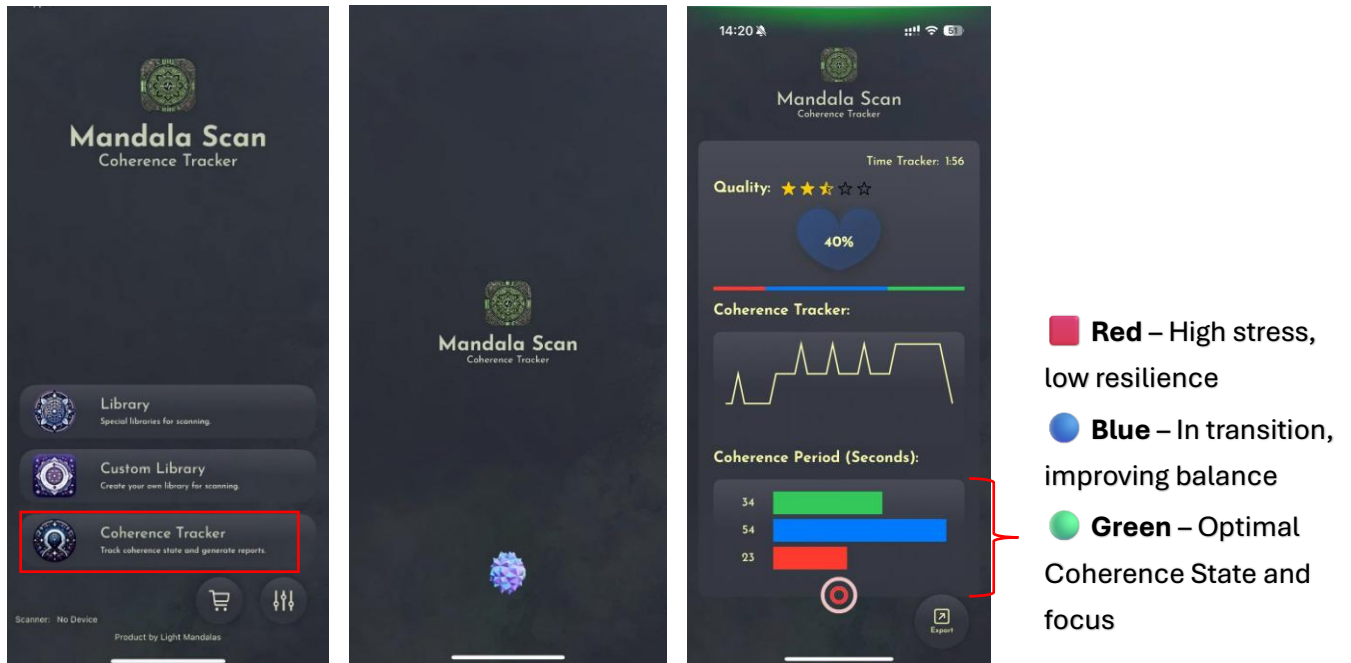
### 3.4 Custom Library

"Custom Library" – Customize and create your own library by adding item names and descriptions.



### 3.5 Coherence Tracker

Allow **Coherence Tracker** to monitor your mental state and generate a report.





## **Disclaimer**

Light Mandalas products are designed as energy support tools for relaxation, stress management, and well-being. They are not medical devices and do not replace professional medical treatment or advice.

Any experiences or testimonials shared regarding the use of our products reflect individual responses and are not guaranteed outcomes. Since personal energy and emotional states vary, users may experience different effects, including heightened sensitivity or discomfort. By using our products, you acknowledge that all outcomes are your sole responsibility.

Light Mandalas Co., Ltd. (Thailand) is not liable for any unintended effects, discomfort, or injuries that may arise from product use. If you have any medical concerns, please consult a healthcare professional before using our products.

***For any questions, please reach out to us for further support.***

Light Mandalas Co., Ltd. (Thailand Headquarters):

- Light Mandalas Website: [www.light-mandalas.com](http://www.light-mandalas.com)
- Email: [info@light-mandalas.com](mailto:info@light-mandalas.com)
- Instagram: [@mandalawave9](https://www.instagram.com/mandalawave9)
- YouTube Channel: Light Mandalas Official
- TikTok: Light Mandalas
- WeChat: Light Mandalas 光之曼陀罗
- Technical Support Email: [cservice@light-mandalas.com](mailto:cservice@light-mandalas.com)